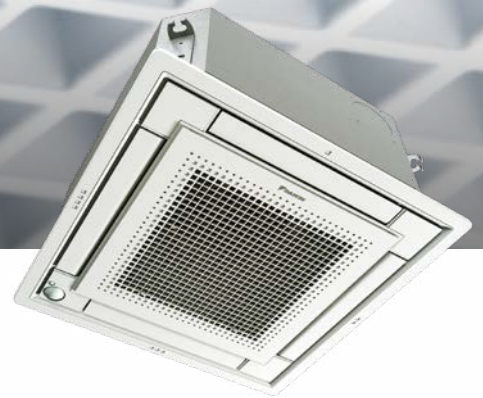


**SKYAIR  
COMPACT  
CASSETTE**  
(FULLY FLAT)





# FULLY FLAT CASSETTE

DESIGN AND GENIUS IN ONE

Daikin's Fully Flat Cassette is a powerful, efficient and discreet solution for commercial, retail and residential applications where both aesthetics and performance are paramount.

The Fully Flat Cassette combines the latest technology with innovative functions for high operating efficiency and user comfort, all within a unique design that allows the visible panel to fit flush within standard architectural ceiling panels.

## TOP EFFICIENCY YEAR-ROUND

Daikin's Fully Flat Cassette delivers exceptional performance and efficiency throughout the entire year. An optional presence sensor also helps deliver even greater operating efficiency

### AIR QUALITY

The quality of the air in the room is as important as the temperature and we have fitted advanced filters to help remove dust particles to ensure the air is clean.

### QUIET COMFORT

The Fully Flat Cassette is one of the quietest units in the light commercial market and, in addition to the sensors, has various functions that are designed to enhance user comfort.

## FULLY INTEGRATED, FULLY DISCREET

The Fully Flat Cassette is a unique iconic design with an elegant white finish with a white decoration panel. The cassette blends in, resulting in a fully discreet unit.

### FULLY FLAT WITH THE CEILING

Daikin's Fully Flat Cassette is the first cassette that fits fully flat with the ceiling, making the unit blend discreetly in the ceiling.

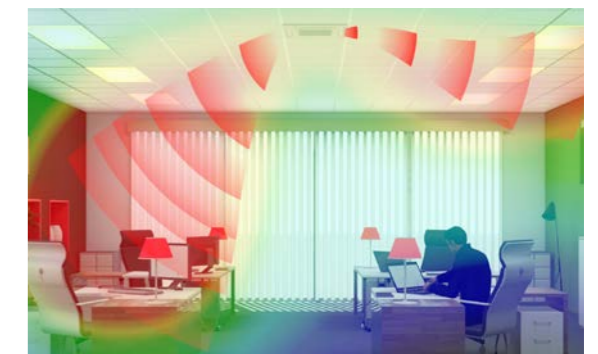
### FITS CEILING TILES PERFECTLY

The newly designed panel integrates fully within one ceiling tile enabling lights, speakers and sprinklers to be installed in the adjoining ceiling tiles.



## DIFFERENTIATED BY EXCELLENCE

To ensure perfect interior comfort the Daikin Fully Flat Cassette can be fitted with an optional sensor\* linked to an advanced controller.



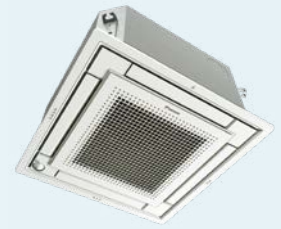
When there is nobody in the room, the presence sensor\* adjusts the set point or switches off the unit, avoiding unnecessary cooling or heating. When motion is detected the temperature is reset to its original setpoint ensuring perfect, energy efficient operation.

The presence sensor\* also helps direct airflow away from you for draught free comfort. While the floor sensor\* monitors temperature difference between the floor and ceiling to maintain even temperature and prevent temperature stratification in the space.

\*Additional sensor kit BRYQ60A2W required to enable this feature (floor and presence sensors included)

# SKY AIR

## COMPACT CASSETTE (FULLY FLAT)



Indoor Unit		FFA25A2VEB	FFA35A2VEB	FFA50A2VEB	FFA60A2VEB
Outdoor Unit		RXS25L3V1B	RXS35L3V1B	RXS50L2V1B	RXS60L2V1B
Rated Capacity	Cool (kW)	2.5	3.4	5.0	5.7
	Heat (kW)	3.2	4.2	5.8	7.0
Capacity Range	Cool (kW)	1.4-4.0	1.4-4.0	1.7-5.3	1.7-6.5
	Heat (kW)	1.3-5.1	1.3-5.1	1.7-6.0	1.7-8.0
Indoor Airflow Rate (H/M/L)	(l/s)	150/133/108	167/142/108	200/167/125	242/208/158
Indoor Fan Speeds		3 steps			
Fascia Panel	Model	BYFQ60C2W1W			
	Colour	White (N9.5)			
	Dimension (HxWxD)	46x620x620			
	Weight (kg)	2.8			
Power Supply		1 phase, 220-240V, 50Hz			
Power Input (Rated)	Cool (kW)	0.56	0.92	1.56	1.89
	Heat (kW)	0.82	1.20	1.66	2.05
E.E.R/C.O.P	Cool/Heat	4.46/3.90	3.70/3.50	3.21/3.49	3.02/3.41
Dimensions (HxWxD)	Indoor (mm)	260x575x575 (+63)*			
	Outdoor (mm)	550x765x285		735x825x300	
Weight	Indoor (kg)	16	16	17.5	17.5
	Outdoor (kg)	34	34	47	48
Compressor Type		Hermetically Sealed Swing Type			
Refrigerant Type		R410A			
Max Pipe Length	(m)	20	20	30	30
Max Level Difference	(m)	15	15	20	20
Pipe Sizes	Liquid (mm)	6.4	6.4	6.4	6.4
	Gas (mm)	9.5	9.5	12.7	12.7
	Drain	VP20 (OD 26 / ID 20)			
Outdoor Operating Range	Cool (°CDB)	-10 to 46			
	Heat (°CWB)	-15 to 18			
Indoor Sound Level (H/M/L)	Cool (dBA)	31/28.5/25	34/30.5/25	39/34/27	43/40/32
	Heat (dBA)	31/28.5/25	34/30.5/25	39/34/27	43/40/32
Outdoor Sound Level (H/SL)	Cool (dBA)	46/43	48/44	48/44	49/46
	Heat (dBA)	47/44	48/45	48/45	49/46
Outdoor EPA Sound Power Level (H)	Cool (dBA)	59	61	62	62
	Heat (dBA)	59	61	62	62

\*Dimension including electrical box

Note:

1. Specifications are based on the following conditions:

Cooling: Indoor temp: 27°CDB, 19°CWB, Outdoor temp: 35°CDB. Equivalent piping length: 5.0m, Level difference: 0m

Heating: Indoor temp: 20°CDB, Outdoor temp: 7°CDB, 6°CWB, Equivalent piping length: 5.0m, Level difference: 0m

2. Sound level: Anechoic chamber conversion value, measured according to JIS parameters and criteria.

During operation these values may differ due to ambient conditions.

**GLOW CITY**  
**352 Morphett Road**  
**Warradale SA 5046**  
**8397 6100**

**GLOW SOUTH COAST**  
**16 Wright Road**  
**Goolwa SA 5214**  
**8554 2860**

[info@glowhce.com.au](mailto:info@glowhce.com.au) | [glowhce.com.au](http://glowhce.com.au)

**Daikin Australia Pty Limited**  
**(ISO 14001)**  
 QEC 20437 October 27, 2006  
 Sydney, Brisbane, Adelaide,  
 Melbourne, Perth



**Daikin Australia Pty Limited**  
**(ISO 9001)**  
 QEC 23256 May 12, 2006  
 Sydney, Brisbane, Adelaide,  
 Melbourne, Newcastle,  
 Townsville, Perth



For all sales enquires email:  
[sales@daikin.com.au](mailto:sales@daikin.com.au)

For customer service or technical support:  
**1300 368 300**

[daikin.com.au](http://daikin.com.au)