

Electrical Accessories

# The coolest way to save energy

Ceiling Sweep Fans

Airflow<sup>®</sup>



**CLIPSAL**<sup>®</sup>  
by Schneider Electric

# It's a breeze to save energy with Airflow

## The Airflow range is expanding

Clipsal's range of Airflow Ceiling Fans just keeps getting bigger and better, providing you with more choice than ever before.

Airflow Ceiling Fans come in three-, four- and five-blade models, with Australia's largest selection of fan controllers, which includes remote controls for added convenience.

With the backing of Clipsal's three-year warranty and trusted after-sales service, you can have peace of mind that you are getting the highest quality and reliability from Australia's number one electrical brand.

## A simple way to save energy

Airflow Ceiling Fans are reversible to provide year-round comfort; circulating a cool breeze in summer and directing warm air down from the ceiling in winter.

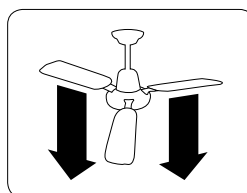
When cool or warm air is well circulated around a room, air conditioning can operate on a lower setting in winter and summer, which helps reduce power bills. Airflow Ceiling Fans are also economical to run, using minimal electricity.

## The right look for your home

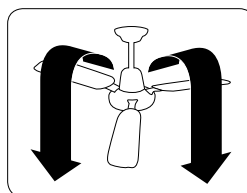
Available in a combination of colours and styles, from crisp and contemporary white to the modern look of stainless steel — the Airflow Ceiling Fan range is designed to suit any décor and provide a solution for every lifestyle.

Three-, four- and five-blade fans are supplied with the popular Clipsal C2000 Series Switches. An extensive range of accessories are also available, including remote controls, mounting kits for raked ceilings and oyster light kits.

## Reversing switch



Cool air is gently circulated down in summer

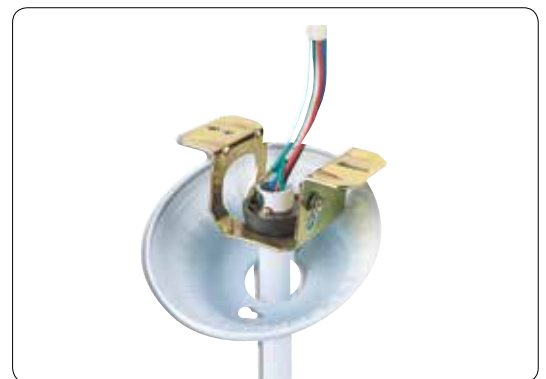


Rising warm air is circulated back into the room in winter.

## Two types of mounting available



J-Hook Mounting



Hangsure Mounting

# Timber Blades

## Five-blade ceiling fans



**ACES52R5L**  
1300mm diameter,  
with remote control

Black blades one side



Silver blades on the other

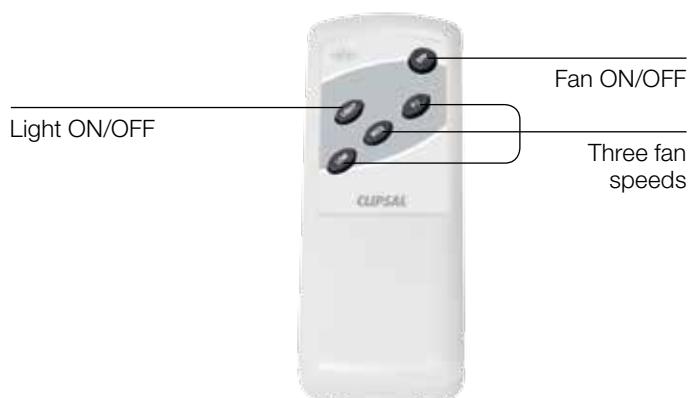


### The ultimate in good looks and performance

These premium fans are designed to provide maximum performance and quiet operation, with a contemporary style that suits any modern interior décor. Airflow Five-Blade Ceiling Fans come with a remote control, providing greater convenience.

The innovative reversible blade design also gives you the option of black or silver blades to suit your interior décor. This model also comes standard with the light fitting, as shown.

## Remote control unit



### Features and benefits

- Energy efficient
- Remote control (RF) with cradle
- High-performance airflow
- Quiet operation
- 1300mm (52") diameter to suit most rooms
- Pre-wired with light
- Operate multiple fans from a single remote control
- Three-speed fan wall switch
- ON/OFF light control
- Hangsure mounting bracket
- Three-year warranty

# Aluminium Blades

## Three-blade ceiling fans

J-Hook Mounting



**3JH900AL**  
900mm diameter



**3JH1200AL**  
1200mm diameter



**3JH1400AL**  
1400mm diameter



### Designed to resist the elements

Airflow Ceiling Fans with aluminium blades offer outstanding corrosion resistance in harsh environments, such as coastal regions and high humidity conditions.

A selection of sizes are available, with two mounting options; J-Hook Mounting for flat ceilings and Hangsure Mounting for raked ceilings.

You can also choose either white or metallic finishes, to complement your interior décor.

# Aluminium Blades

## Hangsure Mounting



**3HS900AL**  
900mm diameter



**3HS1200AL**  
1200mm diameter



**3HS1400AL**  
1400mm diameter



## Features and benefits

- Energy efficient
- Three- or four-blade designs
- 900mm (36"), 1200mm (48") and 1400mm (56") models
- White or metallic finishes
- Three-speed fan wall switch
- Light adaptable
- Top and bottom sealed bearings
- Fan reverse switch
- Pre-wired and partly assembled
- Three-year warranty

All models are designed to suit both oyster (OY) and clipper (CLIP) light fittings.

# Aluminium Blades

## Four-blade ceiling fans

J-Hook Mounting



**4JH1200AL**  
1200mm diameter



**4JH1400AL**  
1400mm diameter

Hangsure Mounting



**4HS1200AL**  
1200mm diameter



**4HS1400AL**  
1400mm diameter



All models are designed to suit both oyster (OY) and clipper (CLIP) light fittings.



# Stainless Steel Blades

## Three-blade ceiling fans

### J-Hook Mounting



**3JH1200SS**  
1200mm diameter



**3JH1400SS**  
1400mm diameter

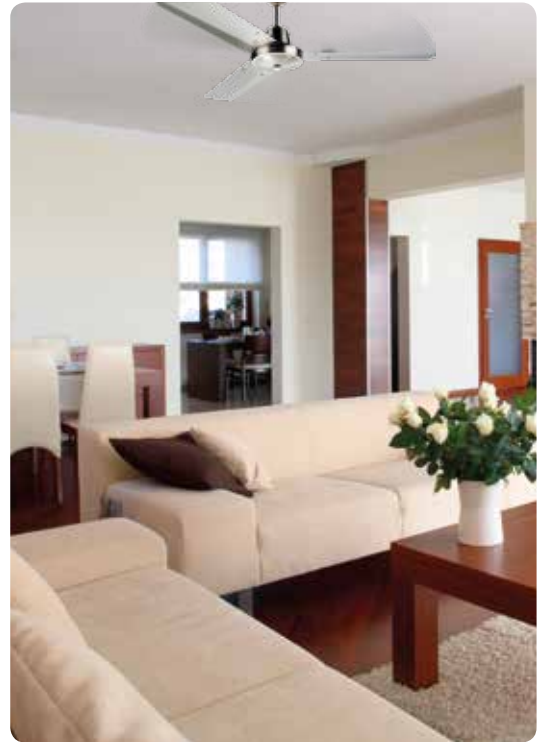
### Hangsure Mounting



**3HS1200SS**  
1200mm diameter



**3HS1400SS**  
1400mm diameter



### Fashionable metallic finish

Airflow Ceiling Fans come in a metallic finish to complement modern homes and commercial spaces.

They provide high-performance air movement and feature 304 grade stainless steel blades and an electroplated body, shaft and cowling.

Metallic finish fans are available in three- or four-blade designs, with a remote control and wall cradle.

### Features and benefits

- Energy efficient
- Three- or four-blade designs
- 900mm (36"), 1200mm (48") and 1400mm (56") models
- Metallic finish
- Light adaptable
- Three-speed fan wall switch
- Top and bottom sealed bearings
- Fan reverse switch
- Pre-wired and partly assembled
- 304 grade stainless steel blades
- Electroplated body, shaft and cowlings
- Three-year warranty

All models are designed to suit both oyster (OY) and clipper (CLIP) light fittings.

# Stainless Steel Blades

## Four-blade ceiling fans

Hangsure Mounting



**4HS1200SS**  
1200mm diameter



**4HS1400SS**  
1400mm diameter



All models are designed to suit both oyster (OY) and clipper (CLIP) light fittings.



# Remote Control

## Three-blade ceiling fans



**3HS1200ALR**  
1200mm diameter



**3HS1200SSR**  
1200mm diameter



### The convenience of remote control

Airflow Ceiling Fans come with the handy option of a remote control for greater convenience.

It also makes installation a breeze because no wall switch needs to be installed to operate the fan.

Remote control models are available in three- and four-blade designs with the choice of white or metallic finishes.

### Features and benefits

- Energy efficient
- Three- or four-blade designs
- White or metallic finishes
- Three-speed fan wall switch or remote control option
- Light adaptable
- Top and bottom sealed bearings
- Fan reverse switch
- Pre-wired and partly assembled
- Three-year warranty

## Four-blade ceiling fans



**4HS1200ALR**  
1200mm diameter



**4HS1200SSR**  
1200mm diameter

All models are designed to suit both oyster (OY) and clipper (CLIP) light fittings.

# Rattan Blades

## Four-blade ceiling fans



**AFLR48**  
1200mm diameter



**AFLR48**  
1200mm diameter  
(Light optional)



### Rattan style for a classic look

Designed to complement heritage or classically styled homes, these fans are ideal for those who prefer a more traditional look.

Available with an optional oyster light and a choice of white or beige, with a distinctive brass trim.

### Features and benefits

- Energy efficient
- Reversible timber/rattan-look blades
- Three-speed fan wall switch
- Top and bottom sealed bearings
- Fan reverse switch
- Pre-wired and partly assembled
- Three-year warranty

All models are designed to suit both oyster (OY) and clipper (CLIP) light fittings.

# Technical Specifications

| Cat. No.                    | No. of Blades | Controller Type | Mounting | Diameter | Colour               | Power | Fan Speed (RPM)              |
|-----------------------------|---------------|-----------------|----------|----------|----------------------|-------|------------------------------|
| <b>Timber Blades</b>        |               |                 |          |          |                      |       |                              |
| ACES52R5L-BZ                | 5             | RF Remote       | Hangsure | 1300mm   | Bronze               | 60W   | High 180 / Med 120 / Low 90  |
| <b>Aluminium Blades</b>     |               |                 |          |          |                      |       |                              |
| 3JH900AL-WE                 | 3             | Wall            | J-Hook   | 900mm    | White (WE)           | 65W   | High 375 / Med 270 / Low 174 |
| 3HS900AL-WE                 | 3             | Wall            | Hangsure | 900mm    | White (WE)           | 65W   | High 375 / Med 270 / Low 174 |
| 3JH1200AL-WE                | 3             | Wall            | J-Hook   | 1200mm   | White (WE)           | 65W   | High 285 / Med 249 / Low 142 |
| 3HS1200AL-WE                | 3             | Wall            | Hangsure | 1200mm   | White (WE)           | 65W   | High 290 / Med 250 / Low 142 |
| 3JH1400AL-WE                | 3             | Wall            | J-Hook   | 1400mm   | White (WE)           | 65W   | High 258 / Med 202 / Low 115 |
| 3HS1400AL-WE                | 3             | Wall            | Hangsure | 1400mm   | White (WE)           | 65W   | High 258 / Med 202 / Low 115 |
| 4JH1200AL-WE                | 4             | Wall            | J-Hook   | 1200mm   | White (WE)           | 66W   | High 275 / Med 223 / Low 140 |
| 4HS1200AL-WE                | 4             | Wall            | Hangsure | 1200mm   | White (WE)           | 66W   | High 275 / Med 223 / Low 140 |
| 4JH1400AL-WE                | 4             | Wall            | J-Hook   | 1400mm   | White (WE)           | 66W   | High 260 / Med 208 / Low 128 |
| 4HS1400AL-WE                | 4             | Wall            | Hangsure | 1400mm   | White (WE)           | 66W   | High 260 / Med 208 / Low 128 |
| <b>Metallic Finish</b>      |               |                 |          |          |                      |       |                              |
| 3JH1200SS-SS                | 3             | Wall            | J-Hook   | 1200mm   | Stainless Steel (SS) | 65W   | High 290 / Med 250 / Low 146 |
| 3HS1200SS-SS                | 3             | Wall            | Hangsure | 1200mm   | Stainless Steel (SS) | 65W   | High 290 / Med 250 / Low 146 |
| 3JH1400SS-SS                | 3             | Wall            | J-Hook   | 1400mm   | Stainless Steel (SS) | 65W   | High 280 / Med 225 / Low 136 |
| 3HS1400SS-SS                | 3             | Wall            | Hangsure | 1400mm   | Stainless Steel (SS) | 65W   | High 280 / Med 225 / Low 136 |
| 4HS1200SS-SS                | 4             | Wall            | Hangsure | 1200mm   | Stainless Steel (SS) | 66W   | High 280 / Med 240 / Low 139 |
| 4HS1400SS-SS                | 4             | Wall            | Hangsure | 1400mm   | Stainless Steel (SS) | 66W   | High 270 / Med 217 / Low 128 |
| <b>RF Remote Control</b>    |               |                 |          |          |                      |       |                              |
| 3HS1200ALR-WE               | 3             | RF Remote       | Hangsure | 1200mm   | White (WE)           | 60W   | High 285 / Med 249 / Low 142 |
| 3HS1200SSR-SS               | 3             | RF Remote       | Hangsure | 1200mm   | Stainless Steel (SS) | 60W   | High 290 / Med 250 / Low 146 |
| 4HS1200ALR-WE               | 4             | RF Remote       | Hangsure | 1200mm   | White (WE)           | 60W   | High 275 / Med 223 / Low 140 |
| 4HS1200SSR-SS               | 4             | RF Remote       | Hangsure | 1200mm   | Stainless Steel (SS) | 60W   | High 280 / Med 240 / Low 128 |
| <b>Rattan Timber Blades</b> |               |                 |          |          |                      |       |                              |
| AFLR48-WE                   | 4             | Wall            | Hangsure | 1200mm   | White (WE)           | 60W   | High 240 / Med 140 / Low 100 |

## Down Rods (Including Remote Control)

| Cat. No.    | Description              | Colours                             |
|-------------|--------------------------|-------------------------------------|
| DR760X21*   | Hangsure 760mm Down Rod  | White (WE),<br>Stainless Steel (SS) |
| DR760X21J*  | J Hook 760mm Down Rod    | White (WE),<br>Stainless Steel (SS) |
| DR1200X21*  | Hangsure 1200mm Down Rod | White (WE),<br>Stainless Steel (SS) |
| DR1200X21J* | J Hook 1200mm Down Rod   | White (WE),<br>Stainless Steel (SS) |

\*Add your selected colour to the Cat. No. e.g. DR760X21WE

## Mounting Kit

| Cat. No. | Description           | Colours    |
|----------|-----------------------|------------|
| HSMK     | Hangsure Mounting Kit | White (WE) |

## Light Kit

| Cat. No. | Description       | Colours              |
|----------|-------------------|----------------------|
| OYWHT    | Oyster Light Kit  | White (WHT)          |
| OYSS     | Oyster Light Kit  | Stainless Steel (SS) |
| CLIPWHT  | Clipper Light Kit | White (WHT)          |
| CLIPSS   | Clipper Light Kit | Stainless Steel (SS) |

## Replacement Blade Sets

| Cat. No.    | Description                  | Colours              |
|-------------|------------------------------|----------------------|
| 3B900AL-WE  | 3 x Blades for 3**900* Fans  | White (WE)           |
| 3B1200AL-WE | 3 x Blades for 3**1200* Fans | White (WE)           |
| 3B1200SS-SS | 3 x Blades for 3**1200* Fans | Stainless Steel (SS) |
| 3B1400AL-WE | 3 x Blades for 3**1400* Fans | White (WE)           |
| 3B1400SS-SS | 3 x Blades for 3**1400* Fans | Stainless Steel (SS) |



**GLOW CITY**

**352 Morphett Road  
Warradale SA 5046  
8397 6100**

**GLOW SOUTH COAST**

**16 Wright Road  
Goolwa SA 5214  
8554 2860**

**info@glowhce.com.au | glowhce.com.au**

For more information about Airflow Ceiling Fans, contact your local Clipsal and Schneider Electric Partner Business Representative, electrical wholesaler or visit [clipsal.com](http://clipsal.com)

**Schneider Electric (Australia) Pty Ltd**

33-37 Port Wakefield Road  
Gepps Cross  
South Australia 5094  
PO Box 132, Enfield Plaza  
South Australia 5085

National Customer Care  
Enquiries: 1300 369 233  
Email: [plugin@clipsal.com.au](mailto:plugin@clipsal.com.au)  
Access this document directly:  
[clipsal.com/brochures](http://clipsal.com/brochures)

Schneider Electric (Australia) Pty Ltd reserves the right to change specifications, modify designs and discontinue items without incurring obligation and whilst every effort is made to ensure that descriptions, specifications and other information in this catalogue are correct, no warranty is given in respect thereof and the company shall not be liable for any error therein.

Trademarks are owned by Schneider Electric Industries SAS or its affiliated companies.

This document has been printed using FSC Mix Certified paper. ISO 14001 environmental management system in use at mill.