



The best air anywhere.

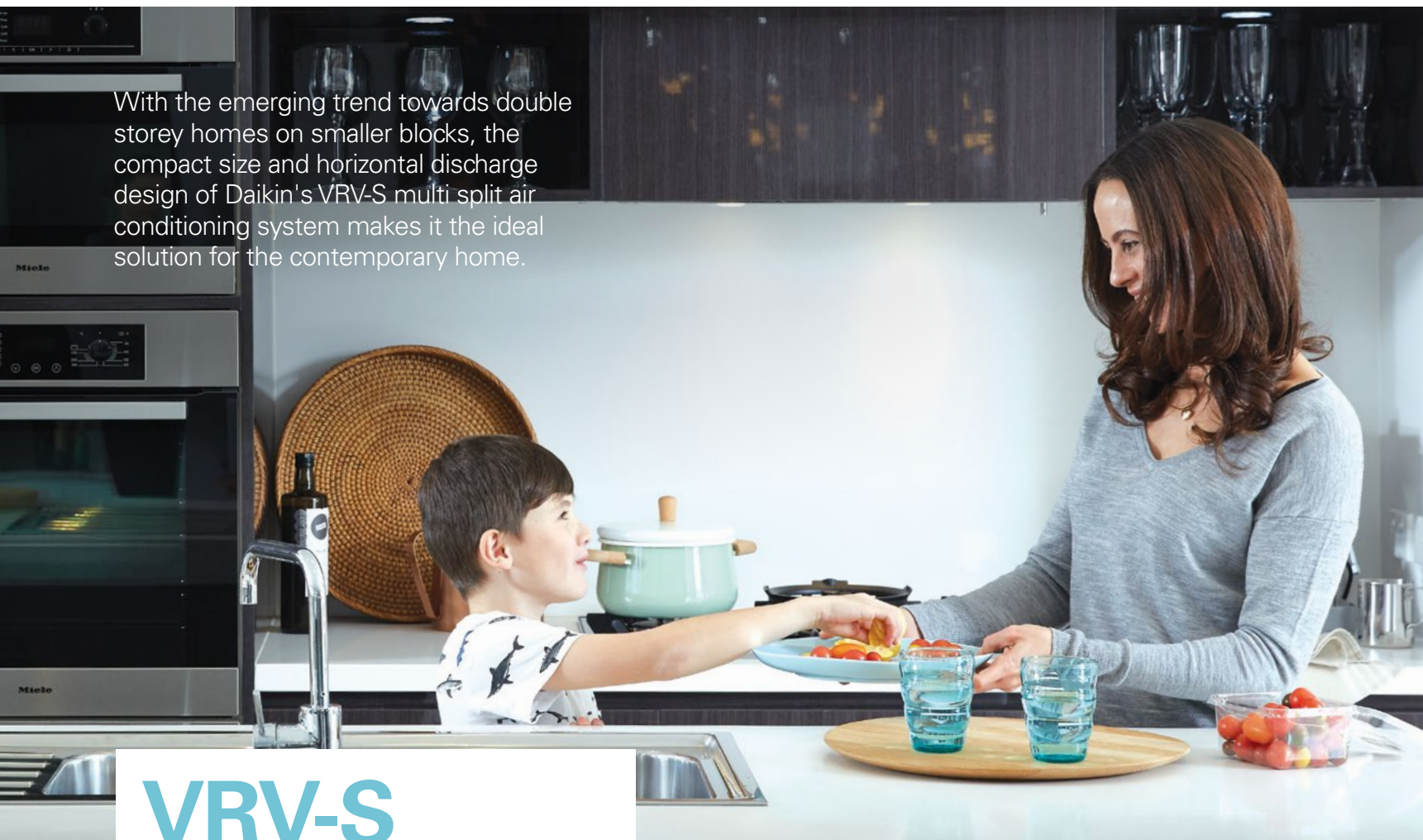


HEATING AND COOLING SOLUTIONS

VRV-S RESIDENTIAL SYSTEMS



With the emerging trend towards double storey homes on smaller blocks, the compact size and horizontal discharge design of Daikin's VRV-S multi split air conditioning system makes it the ideal solution for the contemporary home.



VRV-S

BRINGING INNOVATION TO YOUR HOME



INDIVIDUAL COMFORT

Each indoor unit can be individually controlled, scheduled and set to the desired room temperature ensuring optimal comfort for all occupants in the household at anytime.⁴



COMPACT FOOTPRINT

VRV-S is available in a range of capacities from 9kW up to 24kW whilst maintaining a compact installation footprint with long piping runs of up to 100m¹. This allows you to place the outdoor unit out of sight and not compromise the external appearance of the your home.



INTELLIGENT COMFORT

Wall mounted indoor units feature a human presence sensor that ensures draught free comfort² and automatically enables energy saving operations when the room is unoccupied.



WHISPER QUIET

VRV-S is not just compact in size but also quiet in operations, featuring a night time quiet mode that reduces the outdoor unit noise level down to 43dBA³ for minimal impact to the neighbours.



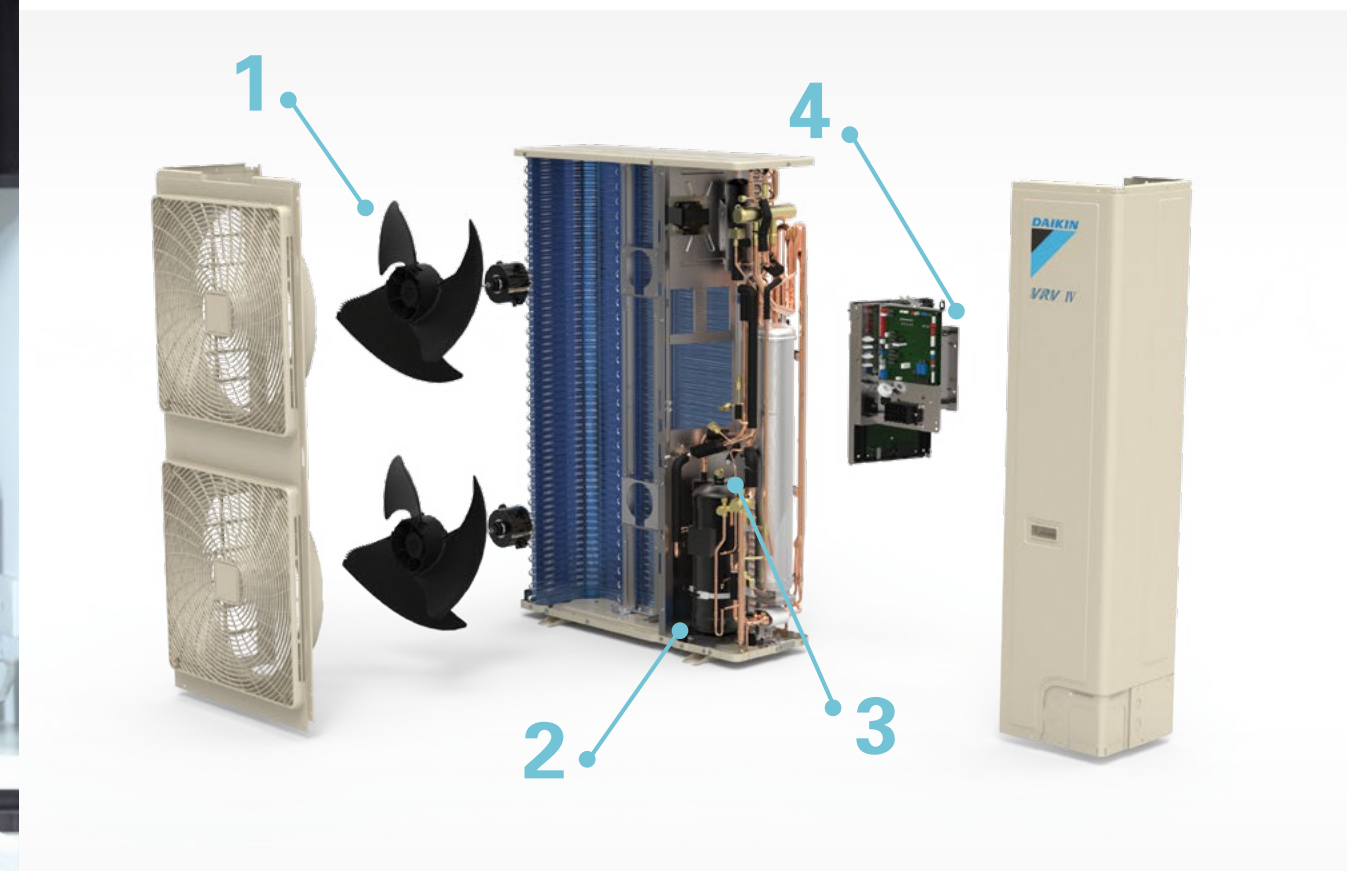
ULTIMATE VERSATILITY

As many as 14 indoor units can be connected to a single outdoor unit combined with a wide selection of indoor units ranging from wall mounted, floor standing, ducted, cassettes and ceiling suspended units, Daikin VRV-S series is truly a versatile system.



Note:

1. Applies to 16.0kW to 24.0kW models
2. Draught prevention is only applicable to wall mounted units
3. Applies to 11.2kW model, noise levels for other models may vary
4. User can select the unit to operate in either cooling or heating mode, not both cooling and heating simultaneously



TECHNOLOGY

1. SAW EDGE FAN BLADE

The addition of a saw tooth edge at the rear of the blade smooths airflow over the blade surface, reducing turbulence which in turn results in a quieter, more efficient means of delivering comfort to your home.

2. COMPRESSOR

Daikin's swing and scroll compressors are quieter and more efficient than conventional compressors, thanks to their high pressure dome construction and usage of high pressure lubrication oil.

3. RELUCTANCE DC MOTOR

All VRV IV-S compressors are equipped with Reluctance DC Motors. These motors utilise the magnetic torque or neodymium magnets in conjunction with reluctance torque, resulting in more energy efficient operation.

4. INVERTER TECHNOLOGY

The Inverter PCB works like the accelerator of a car, gently increasing or decreasing power. This ensures your desired temperature is reached quicker and steadily maintained without fluctuations.

NIGHT TIME QUIET MODE

Once enabled, this mode reduces the operational sound level of the condenser during night time with minimal sacrifice to indoor comfort.

MODE 1: AUTOMATIC MODE

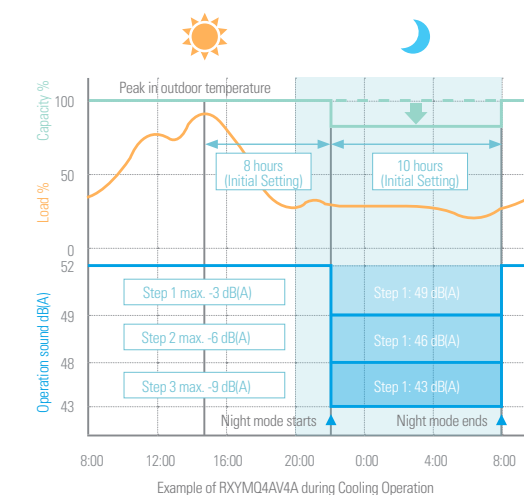
Night mode will initiate 8 hours after peak temperature and last another 10 hours before resuming to normal operation.

MODE 2: MANUAL MODE

Starting time and ending time can be input. (PCB adaptor required, speak to dealer for more info)

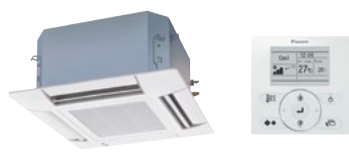
MODE 3: COMBINED MODE

Combination of modes 1 and 2 can be used.



PRODUCT RANGE

Indoor Units



| Compact Cassette | |
|------------------|--|
| Model Name | FFQ-B |
| Capacity Range | 2.5-6.0kW |
| Application | <ul style="list-style-type: none">- 4 way airflow delivers even temperatures over open plan areas- Quiet operations in a compact size for easy installation |



| Ceiling Mounted Built-in | |
|--------------------------|---|
| Model Name | FXSQ-P |
| Capacity Range | 2.2-16.0kW |
| Application | <ul style="list-style-type: none">- Wide capacities available in a compact size with 245mm height, ideal for open plan areas and installation in tight ceiling spaces- Airflow is automatically adjusted to deliver superior comfort |



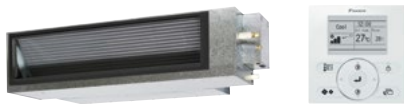
| Designer Wall Mounted (Zena) | |
|------------------------------|---|
| Model Name | CTXG-P |
| Capacity Range | 2.5-5.0kW |
| Application | <ul style="list-style-type: none">- Designer series to suit small to mid sized contemporary rooms- Available in silver or pure white matte finish- 2 Area Intelligent Eye for draft free comfort and energy saving operations |



| Wall Mounted | |
|----------------|---|
| Model Name | FTXS-K |
| Capacity Range | 2.5-7.1kW |
| Application | <ul style="list-style-type: none">- Wide range up to 7.1kW, suitable for larger rooms- Quiet operations with the Intelligent Eye feature for energy savings operations |



| Bulkhead | |
|----------------|--|
| Model Name | CDXS-EA, FDXS-C |
| Capacity Range | 2.5-6.0kW |
| Application | <ul style="list-style-type: none">- Low height unit ideal for installation into drop ceilings- Minimal impact on the internal aesthetics of the room (only air diffusers visible) |



| Ceiling Concealed Ducted | |
|--------------------------|--|
| Model Name | FXDYQ-M(A) |
| Capacity Range | 8.8-28.0kW |
| Application | <ul style="list-style-type: none">- High external static pressures up to 200Pa enables flexible duct design- Powerful supply air fan delivers higher airflow to suit the requirements of larger homes |



| Floor Standing | |
|----------------|--|
| Model Name | FVXS-K |
| Capacity Range | 2.5-5.0kW |
| Application | <ul style="list-style-type: none">- Compact size with a 600mm height, ideal for placement under a window sill, or semi-recessed into an unused fireplace- Dual duct discharge offers superior heating performance |

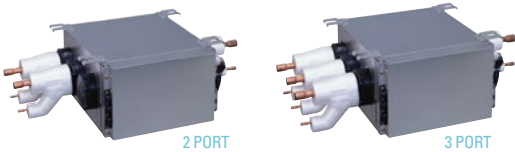


| Floor/Ceiling Suspended Dual | |
|------------------------------|--|
| Model Name | FLXS-B(G) |
| Capacity Range | 2.5-6.0kW |
| Application | <ul style="list-style-type: none">- Flexible design, suitable for ceiling suspended or floor standing installation- Contemporary design of unit blends seamlessly into a modern homes decor |

Note:
1. Indoor units come standard with a wireless remote controller, excludes FFQ-B, FXDYQ-M(A) & FXSQ-P, either a wired or wireless controller needs to be purchased separately
2. Individual indo or unit capacity output may vary depending on system configuration and operating conditions

PRODUCT RANGE

Branch Provider Units and Outdoor Units



| Branch Provider (BP Unit) | | |
|---------------------------|--|------------|
| Model Name | BPMKS967A2 | BPMKS967A3 |
| Number of Ports | 2 | 3 |
| Application | <ul style="list-style-type: none">- Available in 2 or 3 port models- Installed in ceiling space- Enables quieter indoor unit operation as electronic expansion valves are located in the BP Unit | |

Note: All indoor units are required to be connected to a branch provider (excludes FXDYQ-M(A) & FXSQ-P)



| Outdoor Units | | | |
|------------------|---------------------------|---------------------------|---------------------------|
| Model Name | RXYMQ3AV4A | RXYMQ4AV4A | RXYMQ5AV4A |
| Class | 3.5 | 4 | 5 |
| Cooling Capacity | 9.0kW | 11.2kW | 14.0kW |
| Heating Capacity | 10.0kW | 12.5kW | 14.0kW |
| Power Supply | 1-phase, 230-240 V, 50 Hz | 1-phase, 230-240 V, 50 Hz | 1-phase, 230-240 V, 50 Hz |



| Outdoor Units | | | | |
|------------------|---------------------------|---------------------------|---------------------------|---------------------------|
| Model Name | RXYMQ5PV4A | RXYMQ6AV4A | RXYMQ8AY1 | RXYMQ9AY1 |
| Class | 5 | 6 | 8 | 9 |
| Cooling Capacity | 14.0kW | 16.0kW | 22.4kW | 24.0kW |
| Heating Capacity | 16.0kW | 18.0kW | 25.0kW | 26.0kW |
| Power Supply | 1-phase, 230-240 V, 50 Hz | 1-phase, 230-240 V, 50 Hz | 3-phase, 380-415 V, 50 Hz | 3-phase, 380-415 V, 50 Hz |

Daikin's VRV-S wired controllers provide ultimate control of your indoor units to suit your lifestyle needs. Featuring intuitive interfaces for easy operation and a clean minimalistic design that is able to blend seamlessly into your home's decor.



CONTROLLERS

COMFORT AT YOUR FINGERTIPS

WIRED CONTROLLER



MODEL NO:
BRC1E62, BRC073A4

FEATURES

- 1. Clear, backlit display with easy-to-read text
- 2. Weekly schedule timer with maximum 5 actions per day
- 3. Holiday function select the days for which the schedule will be disabled
- 4. Set temperature limit, to predefine a temperature range for cooling or heating cycle, helping you reduce your energy consumption
- 5. Off Timer, programmable in 10 minute increments from 30 minutes to 180 minutes

Note:
1. KRP928B2S adapter required for all indoor units (excludes FFQ-B, FXDYQ-M(A) & FXSQ-P) for compatibility with Central Controller (DCS303A51)
2. BRC1E62 for FFQ-B, FXDYQ-M(A) & FXSQ-P; all other indoor models use BRC073A4

CENTRAL CONTROLLER



MODEL NO:
DCS303A51

FEATURES

- 1. Backlit 5.5" LCD panel for easy readability
- 2. Controls up to 16 groups of indoor units
- 3. Each group has a dedicated button for convenience
- 4. ON/OFF, temperature settings and weekly/daily scheduling can be controlled for each individual indoor unit
- 5. All units can be turned on or off at once

FEATURES CHECKLIST

INDOOR UNITS

| | | ZENA | WALL MOUNTED | BULKHEAD | CEILING MOUNTED | CEILING CONCEALED | FLOOR STANDING | SUSPENDED DUAL | COMPACT CASSETTE |
|-----------------------|-------------------------------------|------|--------------|----------|-----------------|-------------------|----------------|----------------|------------------|
| COMFORTABLE AIRFLOW | Power-Airflow Dual Flaps | ✓ | ✓ | | | | | | |
| | Wide-Angle Louvers | ✓ | ✓ | | | | ✓ | ✓ | |
| | 3D Airflow | ✓ | ✓ | | | | | | |
| | Comfort Airflow Mode | ✓ | ✓ | | | | | | |
| COMFORT CONTROL | Indoor Unit Quiet Operation | ✓ | ✓ | ✓ | | | ✓ | ✓ | |
| | Intelligent Eye | | ✓ | | | | | | |
| | 2-Area Intelligent Eye | ✓ | | | | | | | |
| | Program Dry Function | ✓ | ✓ | ✓ | ✓ | ✓ | ✓ | ✓ | ✓ |
| | Auto Fan Speed | ✓ | ✓ | ✓ | | | ✓ | ✓ | |
| | Hot Start | ✓ | ✓ | ✓ | ✓ | ✓ | ✓ | ✓ | ✓ |
| LIFESTYLE CONVENIENCE | Econo Mode | ✓ | ✓ | | | | ✓ | | |
| | Inverter Powerful Operation | ✓ | ✓ | ✓ | | | ✓ | ✓ | |
| | Home Leave Operation | | | ✓ | ✓ | ✓ | | ✓ | |
| | Backlit Wireless Remote Controller | ✓ | ✓ | | | | | | |
| | Indoor Unit On/Off Switch | ✓ | ✓ | ✓ | | | ✓ | ✓ | |
| CLEAN-LINES | Titanium Apatite Deodorising Filter | ✓ | ✓ | | | | | | |
| | Air-Purifying Filter | | | | | | ✓ | ✓ | |
| | Wipe-Clean Flat Panel | ✓ | ✓ | | | | ✓ | | |
| | Filter Cleaning Indicator | | | | | | | | ✓ |
| TIMERS | 24 Hour On/Off Timer | ✓ | ✓ | ✓ | ✓ | ✓ | ✓ | ✓ | |
| | 72 Hour On/Off Timer | | | | | | | | ✓ |
| | Weekly Timer | ✓ | ✓ | | ✓ | ✓ | ✓ | | |
| | Night Set Mode | ✓ | ✓ | ✓ | | | ✓ | ✓ | |

SPECIFICATIONS

OUTDOOR UNITS

| MODEL | | RXYMQ3AV4A | RXYMQ4AV4A | RXYMQ5AV4A | RXYMQ5PV4A | RXYMQ6AV4A | RXYMQ8AY1 | RXYMQ9AY1 |
|-------------------------|-----------|---------------------------|------------|------------|----------------------------|---------------------------|----------------------------|-----------------|
| Power Supply | | 1-phase, 230-240 V, 50 Hz | | | | | 3-phase, 380-415 V, 50 Hz | |
| Cooling Capacity | kW | 9.0 | 11.2 | 14.0 | 14.0 | 16.0 | 22.4 | 24.0 |
| Heating Capacity | kW | 10.0 | 12.5 | 14.0 | 16.0 | 18.0 | 25.0 | 26.0 |
| Power Consumption | Cool/kW | 2.44 | 2.88 | 3.93 | 3.97 | 4.14 | 5.94 | 6.88 |
| | Heat/kW | 2.28 | 2.60 | 3.04 | 4.09 | 4.07 | 6.25 | 6.82 |
| Capacity Control | | 24 to 100% | | 16 to 100% | 24 to 100% | 16 to 100% | 20 to 100% | |
| Compressor | Type | Hermetically sealed swing | | | Hermetically sealed scroll | Hermetically sealed swing | Hermetically sealed scroll | |
| | | | | | | | | |
| Airflow rate | L/s | 1,267 | | | 1,767 | | 2,333 | |
| Dimensions (HxWxD) | mm | 990x940x320 | | | 1,345x900x320 | | 1,430x940x320 | |
| Weight | kg | 71 | | 82 | 125 | 104 | 138 | |
| Sound Level (Cool/Heat) | dB(A) | 51/52 | 52/54 | 53/54 | 51/53 | 55/56 | 57/58 | 58/59 |
| Sound Power | dB(A) | 69 | 70 | 71 | 69 | 73 | 75 | 76 |
| Operation Range | Cool/°CDB | -5 to 46 | | | | | | |
| | Heat/°CWB | -20 to 15.5 | | | | | | |
| Refrigerant | Type | R-410A | | | | | | |
| | Charge/kg | 2.9 | | 3.4 | 4.0 | 3.6 | 5.8 | |
| Piping Connections | Liquid/mm | Ø9.5 (Flare) | | | | | Ø9.5 (Brazing) | |
| | Gas/mm | Ø15.9 (Flare) | | | | Ø19.1 (Flare) | Ø19.1 (Brazing) | Ø22.2 (Brazing) |

Note:
1. Specifications are based on the following conditions:
Cooling: Indoor temp: 27°CDB, 19°CWB, Outdoor temp: 35°CDB. Equivalent piping length: 7.5m, Level difference: 0m
Heating: Indoor temp: 20°CDB. Outdoor temp: 7°CDB, 6°CWB, Equivalent piping length: 7.5m, Level difference: 0m
2. Sound level: Anechoic chamber conversion value, measured at a point 1m in front of the unit at a height of 1.5m and may differ once the unit is installed due to ambient conditions
3. For complete range of indoor units, specifications, features and piping schematic of the VRV-S product, please refer to Daikin's VRV IV-S Brochure

The specifications, designs and information in this brochure are subject to change without notice. Unit colours shown are as close as possible to actual unit colours. Colours depicted in this brochure may vary slightly.

ASSUMPTIONS

All representations made in Daikin marketing and promotional material are based on the assumptions that the correct equipment has been selected, appropriately sized and installed in accordance with Daikin's installation instructions and standard industry practices.

QUALITY CERTIFICATIONS

Daikin Industries Limited was the first air conditioning equipment manufacturer in Japan to receive ISO 9001 certification. All Daikin manufacturing facilities have been certified to ISO 9001 Quality Management System requirements. ISO 9001 is a certificate for quality assurance concerning 'design, development, manufacturing, installation and related service' of products manufactured at that factory.

ENVIRONMENTAL CERTIFICATIONS

Daikin Industries Limited has received ISO 14001 Environmental Certification for the Daikin production facilities listed below. ISO 14001 is an international standard specifying requirement for an environmental management system, enabling an organisation to formulate policy and objectives, taking into account legislative requirements and information about significant environmental impacts. It applies to those environmental aspects within the organisation's control and over which it can be expected to have an influence.

The certification relates only to the environmental management system and does not constitute any endorsement of the products shipped from the facility by the International Organisation for Standardisation.

Head Office /Tokyo Office
Shiga Plant (Japan)
Sakai Plant (Japan)
Daikin Industries Ltd (Thailand)
Yodogawa Plant (Japan)
Daikin Australia Pty. Ltd.

Certificate number: EC02J0355
Certificate number: EC99J2044
Certificate number: JOA-E-80009
Certificate number: JOA-E-90108
Certificate number: EC99J2057
Certificate number: CEM20437

**Daikin Australia Pty Limited
(ISO 9001)**
OEC 23256 May 12, 2006
Sydney, Brisbane, Adelaide,
Melbourne, Newcastle,
Townsville, Perth



**Daikin Australia Pty Limited
(ISO 14001)**
CEM 20437 October 27, 2006
Sydney, Brisbane, Adelaide,
Melbourne, Perth



**Residential Air Conditioning
Manufacturing Div (ISO 9001)**
JOA-0486 May 2, 1994
(Shiga Plant)

**Commercial Air Conditioning
and Refrigeration
Manufacturing Div (ISO 9001)**
JMI0107 December 28, 1992
(Kanaoka Factory and Rinkai
Factory at Sakai Plant)

**Industrial System and Chiller
Products Manufacturing Div
(ISO 9001)**
JOA-0495 May 16, 1994
(Yodogawa Plant and Kanaoka
Factory and Kishiwada Factory)

Daikin Europe N.V (ISO 9001)
Lloyd 928589.1 June 2, 1993

Daikin Industries (Thailand) Ltd
JOA-1452 September 13, 2002
(ISO 9001)



DEALER



Glow City

352 Morphet Rd
Warradale
8397 6100

Glow South Coast

4 Victor Harbor-Goolwa Rd
Middleton
8554 2860

info@glowhce.com.au | www.glowhce.com.au

For all sales enquires email:
sales@daikin.com.au

For customer service or technical support:
1300 368 300

daikin.com.au