

ENERGY STORAGE SYSTEM

ME 3000SP



Easy installation

- Compatible with existing grid-tied PV inverters.
- No need to upgrade distribution system.
- Uses a split-core CT, no need to disconnect the electrical grid at all .

Simple and Reliable

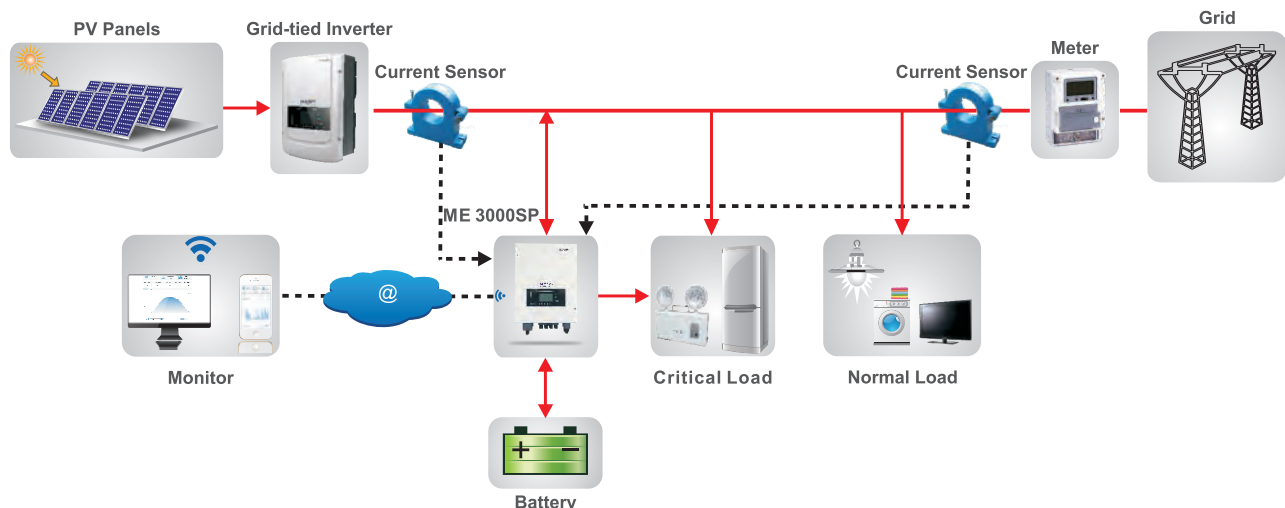
- Exchanges energy via the electrical grid, no coupling with PV inverter, mature technology, simple and reliable.
- Can integrate with all grid-tied renewable systems, including solar, wind, fuel cell etc.

Flexible solution

- Provides a full solution for energy consumers to maximize the use of their generated solar energy.
- Increases self-consumption rate (from 20% to 70%).
- User-adjustable battery charging current suits different types of batteries.

Multiple modes

- Supports stand alone mode (like UPS), Ensure the safe operation of critical load.
- Programmable multiple operations modes: Grid tie, Off grid, and grid-tie with backup.



ENERGY STORAGE SYSTEM

ME 3000SP

Technical Data

ME 3000SP

BATTERY PARAMETERS

Battery Type	Lead-acid,Lithium-ion
Nominal battery voltage	48V
Battery voltage range	40-60V
Recommended battery capacity	200Ah (100~500Ah optional)
Recommended Storage capacity	9.6kWh
Max.Charging Current	60A
Charging Current Range	0-60A(Programmable)
Charging curve	3-stage adaptive with maintenance
Max.Discharging Current	60A
Electronic protection	OCP OTP OVP
Short circuit protection	Fuse (100A)
Discharge times (Hour)	Po=1kVA 9.6h
	Po=3kVA 3.2h
Depth of discharge	Lithium : 0~80%DOD adjustable
	Lead-acid:0~50%DOD adjustable

AC OUTPUT

Max.Output Power	3kVA
Peak Power	1.5*Pnom ,10S; 1.2*Pnom ,30S
Rated Output Voltage	230V
Max.Output Current	13A
AC Voltage Range	180V-270V
Grid Frequency Range	44~55Hz / 54~66Hz
THD	<3%
Power Factor	1(Adjustable +/-0.8)
Connection phase	single

SYSTEM PARAMETERS

Max.Charging Efficiency	94.5%
Max.Discharging Efficiency	94%
Stanby Losses	<5W
Topology	High Frequency Isolated Transformer
Degree Of Protection	IP65
Safety Protection	Anti islanding, RCMU, Ground Fault Monitoring
Certification	AS4777,VDE0126-1-1,G83/2,C10/11,RD1699,UTEC15-712-1,EN50438,VDE-AR-N4105
Communication	WiFi,RS485,CAN2.0

ENVIRONMENTAL

Ambient temperature range	-25°C...+60°C (Above 45°Derating)
Allowable Relative Humidity Range	0... 95%, No Condensing
Max.Operating Altitude	2000m
Current Sensor Connection	external

GENERAL DATA

Noise	<25dB
Weight	16kg
Cooling	Natural
Dimension(W*H*D)	532*360*173mm
Display	LCD display
Warranty	5 Years (Optional: extension to 10 years)

Emergency Power Supply

EPS rated power	3000VA
EPS rated voltage, Frequency	230V,50/60Hz
EPS rated current	13A
EPS peak power	1.5*Prated, 10s
Total harmonic distortion	<3%
Switch time	<3s



AS4777 G83/2 G59/3

CE, CQC, IEC, VDE-AR-N4105 / VDE-0126, EMC, C10/11, EN50438, RD1669, CEI 0-21